

Illustrated Catalogue [8 Plates] Price 2/-

GLENDINGING & Co.

LIMITED

**7 Blenheim Street, New Bond Street,
London, W.1.**

Phone MAYFAIR 0416

Catalogue of

**A Choice Collection of Copper Coins,
including patterns and proofs, of
Great Britain and the Colonies**

formed by

MAJOR A. W. FOSTER

DAY OF SALE

Monday, October 19th, 1953

Commencing at 1 p.m. precisely

ON VIEW *Thursday and Friday prior and Morning of Sale*

CONDITIONS OF SALE.

FIRST.—The highest bidder to be the buyer; and if any dispute arise between two or more bidders, the lot so in dispute shall be immediately put up again and resold, provided the auctioneer cannot decide the said dispute.

SECOND.—No person to advance less than 1s.; above five pounds 5s.; and so on in proportion.

THIRD.—All lots are put up for sale subject (a) to any reserve price imposed by the seller and (b) to the right of the seller to bid either personally or else by any one person who may be the Auctioneer.

FOURTH.—The purchasers to give in their names and places of abode, and to pay down 5s. in the pound, or more in part of payment, or the whole of the purchase-money, *if required*; in default of which the lot or lots so purchased to be immediately put up again and resold.

FIFTH.—Each lot is believed to be genuine, but should any lot prove to be a forgery, or reprint, or wrongly described in the catalogue, the purchaser is at liberty to take or reject it, provided always that notice of such rejection be made and the lot returned within seven days from date of sale.

SIXTH.—The Auctioneers will not hold themselves responsible for any action that may arise, acting solely as agents between buyer and seller and for both equitably.

The Auctioneers do not hold themselves responsible for the safe custody of any lots left more than three days after the date of Sale.

Please Note.

The metal in which the coins are struck is indicated thus:—

A = gold, *AR* = silver, *Æ* = copper or bronze.

El = Electrum (an alloy of gold and silver).

Bl = Billon (an alloy of silver and copper).

Care is taken to describe accurately the condition of coins and medals, using the following scale: *Extremely fine*, *Very fine*, *Fine*, and *Good*. Where no condition is stated it may be assumed that the coins and medals are not in good condition.

INTRODUCTION

This small but choice collection consists mainly of copper issues of Great Britain and the Colonies, but also includes a few nice Colonial silver pieces. Each coin has been carefully selected for condition and the general state of preservation is much above the average for such pieces.

The collection is the finest of this series offered for sale for many years and includes many varieties which have not before appeared at public auction.

All the important coins are illustrated on the eight plates, but special mention should be made of the important series of patterns for a Decimal Coinage which form lots 112 to 134.

Glendining & Co., Ltd.

A. H. Baldwin & Sons, Ltd.

CATALOGUE
OF
A Choice Collection of
COPPER COINS, INCLUDING PATTERNS and
PROOFS, of GREAT BRITAIN and
the COLONIES

formed by Major A. W. FOSTER

Day of Sale

Monday, October 19th, 1953

at 1 p.m. PRECISELY

LOT

1* ELIZABETH, silver pattern penny 1601, bust almost facing,
rev. Royal monogram crowned (Montague 2). *Very fine,*
very rare.

1 11 10 0

2* — Silver pattern farthing 1601, Royal monogram crowned, *rev.*
portcullis, date above (M.4). *An extremely fine struck*
specimen, very rare.

1 18 10 0

3 JAMES I, Harington and Lennox farthings, m.m.'s flower on
both sides, cross on both sides (2), cross on *obv.* only;
cinquefoil on *rev.* only, half-farthings with m.m. fret (2),
one silvered and having D under crown. CHARLES I, Rich-
mond and Maltravers farthings, harp type (23) including one
m.m. rose on a square flan, rose type (6), rose type with
crossed sceptres under crown (2). *Some quite rare mint*
marks, mostly very fine.

38

4* CHARLES I, pattern half groat in silver by Briot, 1640, crowned
rose between C.R., *rev.* crowned thistle 1640 and B below
(M.14). *Very fine and very rare.*

1 8 10 0

Lot

- 10 10 0 5* — Pattern half groat in silver, by Briot, bust to right, *rev.* REGIT VNVS VTROQVE sceptre and trident, (M.11) another by Briot with *rev.* interlaced C's (M. 8), and a pattern farthing in copper without legend on either side, three crowns connected by a knot (M.6) (*illustrated*). *The last rare and all very fine.* 3
- 23 0 0 6* **COMMONWEALTH**, pattern farthing in mixed metal, shield of St. George ENGLANDS FARDIN' *rev.* Irish harp, FOR NECESSARY CHA' (M.3). *Very fine but cracked in striking, very rare.* 1
- 6 15 0 7 — Pattern farthing in copper, three columns, THVS VNITED INVINCIBLE, R in exergue, *rev.* ship, AND GOD DIRECT OUR CORSE (M.5). *Very fine, very rare.* 1
- 6 10 0 8 — Pattern farthing in pewter, a shield with a cross fourchee T.K. in a garland above, $\frac{1}{4}$ OUNCE OF FINE PEWTR., *rev.* a harp in shield over sun FOR NECESSARY CHANGE (M.7). *Somewhat corroded but fine for this coin.* 1
- 13 0 0 9 **CHARLES II**, Current half-pennies 1672, 1673, 1675, farthings 1672, 1672 with flowing drapery under arm, 1673, 1674, 1675 (2), 1679. *Mostly very fine, some scarce.* 10
- 10 10 0 10* — Pattern farthing 1671, in copper, similar type to current coin. *Extremely fine and very rare.* 1
- 6 0 0 11* — Pewter farthing, dated 1684 on edge, mullet before and after NVMORVM (M.3). *Very fine and rare.* 1
- 26 0 0 12* — Pattern halfpenny in silver, ship sailing left, *rev.* St. Michael and dragon SOLI DEO GLORIA (M.1). *In beautiful state, very rare.* 1
- 3 10 0 13 — Pattern halfpennies, similar type to last lot (M.1), in copper, copper with brass centre, and brass with copper centre; pattern halfpenny in silver, head of King to right P.R. (Roettier) below, *rev.* sleeping lion QUIESCIT (M. page 42a). *The last very fine, some rare.* 4
- 10 0 0 14* — Pattern farthing in silver, crowned bust to left, *rev.* three interlinked pillars (M.5). *Very fine and very rare.* 1
- 10 10 0 15* — Pattern farthing in copper, three interlinked pillars with crowned C.R. at sides, on obverse and reverse (M.6). *Very fine and very rare.* 1
- 9 10 0 16* — Pattern farthing in silver 1660, C.R. crowned at sides of crowned rose, date under THVTH AND PEACE, *rev.* three interlinked pillars THVS VNITED INVINCIBLE, M.7. *Fine and very rare.* 1

Lot

- | | | | | | | |
|-----|--|--|----|----|----|---|
| 17 | — | Pattern halfpenny without date, <i>rev.</i> Britannia, in copper (M.47); pattern farthings (3) 1663 with date between crowns and reading HI, in copper (M.10), <i>rare</i> ; 1675 and 1676 both in silver (M.12 and 13), <i>first and third extremely fine, others fine.</i> | 4 | 6 | 0 | 0 |
| 18 | — | Pattern farthings 1662, crowned emblems, <i>rev.</i> ship sailing to left, edge MONETAE INSTAVRATOR 1662 (M.14), <i>fine but plugged</i> ; others similar (2) with milled edges, one on a very thin flan (M.16 and 16b), <i>last two very fine and rare.</i> | 3 | 8 | 0 | 0 |
| 19 | — | Pattern farthings, 1665, <i>rev.</i> QVATVOR MARIA . VINDICO bust with hair short, edge milled in silver and copper, and a similar pair with edge plain (M.18). <i>Three are extremely fine.</i> | 4 | 6 | 10 | 0 |
| 20 | — | Pattern farthings 1665, similar to last but bust with hair long, edge milled in silver and copper, and a similar with plain edge (M.19). <i>Mostly very fine.</i> | 4 | 5 | 0 | 0 |
| 21 | — | Pattern farthings (2) crowned interlinked C's, <i>rev.</i> a rose, in brass, silver plated (M.20), <i>extremely fine</i> ; pattern in pewter 2 C's and 2 R's crowned, <i>rev.</i> four sceptres crossed, a copper ring in centre (M.25), <i>fine and rare.</i> | 2 | 5 | 15 | 0 |
| 22* | JAMES II , pewter halfpenny with copper plug, edge reads NVMMORVM FAMVLVS 1685. <i>Extremely fine and extremely rare in this condition.</i> | 1 | 24 | 0 | 0 | |
| 23* | — | Another dated 1686 on edge. <i>Extremely fine and extremely rare in this condition.</i> | 1 | 16 | 10 | 0 |
| 24 | — | Another from a different die. <i>Very fine.</i> | 1 | 12 | 0 | 0 |
| 25* | — | Another dated 1687 on edge. <i>Extremely fine.</i> | 1 | 14 | 10 | 0 |
| 26* | — | Pewter farthing with copper plug 1686, armoured bust (M.3). <i>Extremely fine and very rare.</i> | 1 | 15 | 10 | 0 |
| 27 | — | Another with armoured bust dated 1685, <i>fine</i> ; and one dated 1687 with draped bust (M.2), <i>very good. Both rare.</i> | 2 | 8 | 0 | 0 |
| 28* | WILLIAM and MARY , pewter halfpenny with copper plug, dated 1690 on edge. <i>Very fine and rare.</i> | 1 | 15 | 10 | 0 | |
| 29 | — | Pewter farthing with copper plug, dated 1689 in exergue and on edge. <i>Fine and an extremely rare date.</i> | 1 | 9 | 10 | 0 |
| 30* | — | Pewter farthing with copper plug, dated 1690 in exergue and on edge. <i>Extremely fine and very rare.</i> | 1 | 10 | 10 | 0 |
| 31 | — | Halfpenny and farthing in copper 1694, pattern halfpenny with head and inscription both sides (M.3). <i>All very fine.</i> | 3 | 3 | 0 | 0 |

Lot

- 36 0 0 32* — Proof farthing 1692 in copper, long hair as the pewter coins. *In mint state and excessively rare.* 1
- 7 0 0 33 — Pattern halfpenny in copper with large head each side of rather coarse work (M.2), *very good and shows signs of original gilding*; pattern halfpenny 1694, Britannia seated in chair (M.8), *very fine. Both rare.* 2
- 13 0 0 34* — Pattern halfpenny in copper, without date, *obv.* busts to right, *rev.* the Crosses of St. George and St. Andrew in a shield ENGLISH COPPER (M.5). *Almost very fine for this rarity.* 1
- 16 10 0 35* — Pattern halfpenny in copper 1694, Britannia seated on a globe (M.7). *Extremely fine and rare.* 1
- 8 0 0 36 — Pattern halfpennies (3) all in silver, *obv.* busts to right, *revs.* HISCE SVFFVLTA (M.11), IGNIBVS IMPAR (M.12), IVNGIT AMOR PATRIAEQ. SALVS (M.13 die a). *The last two extremely fine.* 3
- 7 0 0 37 — Other examples similar to last, M.11 in half copper and half brass, M.11 in yellow metal, M.13 (die b) in half copper and half brass. *All very fine and rare.* 3
- 5 10 0 38 — Proof farthings (2) 1694, in silver, from different dies. *Both extremely fine.* 2
- 14 10 0 39 — Pattern farthings in silver (7), head either side, M.15 on thick and thin flans; *obv.* bust of Mary, *rev.* EX CANDORE DECVS M.18 on thick and thin flans; *rev.* EX NOCTE DIEM (M.19); *obv.* bust of William, *rev.* IGNIBVS IMPAR (M.21); *rev.* NON DEVIO (M.22). *All extremely fine.* 7
- 4 10 0 40 — Pattern farthings in copper (6) M.15 on thick and thin flans, M.17, M.18 on thick and thin flans, M.21, and an elephant halfpenny of William III without date. *Mostly very fine.* 7
- 16 10 0 41 William III, current copper halfpennies dated 1695, 1696, 1697, 1698, 1699 (2), 1700, 1701 with inverted A's for V's; farthings 1695, 1696, 1697, 1699, 1700 (2) all with date in exergue and a farthing of 1699 with date in legend. *Many very fine and better than usually found.* 15
- 6 10 0 42 — Proof farthings in silver (3), 1698 (2), 1699 on a thick flan, all with date in legend. *One of each date extremely fine, all scarce.* 3
- 9 10 0 43* ANNE, pattern halfpenny, with bust to left on both sides ANNA DEI GRATIA, edge plain (M.1). *Very fine and very rare.* 1

LOT

44*	— Pattern halfpenny, bust to left, <i>rev.</i> the Queen seated to left holding an olive branch and a spear (M.3). <i>A scratch across obverse, extremely fine and rare.</i>	1	6	10	0
45*	— Pattern halfpenny, <i>rev.</i> the Queen holding a rose and thistle and a spear (M.4). <i>Extremely fine and rare.</i>	1	7	0	0
46*	— Pattern halfpenny, <i>rev.</i> a rose and thistle crowned (M.5). <i>Brilliant copper proof and rare.</i>	1	6	10	0
47	— A similar pattern (M.5). <i>Extremely fine bronzed proof.</i>	1	5	10	0
48*	— Pattern halfpenny, <i>rev.</i> rose and thistle uncrowned (M.6). <i>Extremely fine and rare.</i>	1	8	0	0
49*	— Pattern halfpenny in silver, <i>obv.</i> Anne seated to left holding an olive branch, <i>rev.</i> rose and thistle uncrowned (M.8). <i>Extremely fine and very rare.</i>	1	24	0	0
50	— A similar piece in copper (M.8). <i>Fine and rare.</i>	1	6	0	0
51*	— Pattern farthing 1713 in silver (M.11). <i>In mint state and very rare.</i>	1	10	0	0
52	— Pattern farthings 1713 in copper (M.11 and 11 var.), one with dot before date and the other without date. <i>Both very fine.</i>	2	11	0	0
53*	— Pattern farthing 1713, in copper, variety with smaller letters on <i>rev.</i> (M. 11 var.). <i>Extremely fine and a rare variety.</i>	1	6	10	0
54*	— Pattern farthing 1713, in silver, <i>rev.</i> Queen seated under a portico (M.12). <i>Extremely fine and rare.</i>	1	11	10	0
55*	— Pattern farthing 1713, in copper on thick flan, <i>rev.</i> the Queen as Peace in a biga (M.13). <i>Extremely fine and rare.</i>	1	11	0	0
56	— Pattern farthing, 1714 in copper, <i>obv.</i> reads ANNA REGINA (M.14). <i>Very fine and rare.</i>	1	4	10	0
57	— Pattern farthing 1714 in silver, <i>obv.</i> reads ANNA GRATIA (M.15). <i>Fine and very rare.</i>	1	7	10	0
58	— A similar piece in copper on a wide flan (M.15). <i>Extremely fine.</i>	1	4	0	0
59	— Another in copper on a more compact flan. <i>Extremely fine.</i>	1	3	5	0
60	GEORGE I , Dump halfpenny 1717, in silver, <i>fine and very rare</i> ; and a beautiful proof in copper (M.1).	2	7	0	0

LOT

- 7 10 0 61 — Current halfpennies, dump issue 1717, 1718, broader issue 1719, 1720, 1721, 1722, 1723, 1724, farthings 1719, 1720, 1721, 1722, 1723, 1724. *All very fine and several in mint state.* 14
- 5 0 0 62 — Dump farthings 1717. *One very fine the other extremely fine, rare.* 2
- 12 10 0 63* — Dump farthing 1717, overstruck on an elephant halfpenny of William III. *An interesting piece, very good and probably unique.* 1
- 4 10 0 64* — Dump farthing 1717 in silver. *An extremely fine proof, rare.* 1
- 5 10 0 65 — Dump farthings (2) 1718. *Both in silver and very fine proofs.* 2
- 8 10 0 66 — Farthing 1719 in silver. *Fine and very rare.* 1
- 12 10 0 67* **GEORGE II**, Young head halfpenny 1729, struck in silver. *An extremely fine proof and very rare.* 1
- 9 10 0 68 — Young head halfpennies 1729, proofs in copper, copper bronzed and copper gilt, and a bronzed proof of farthing 1730. *Extremely fine except the gilt piece which is very rare.* 4
- 4 0 0 69* — Halfpenny 1730 with the error reading GEOGIVS. *Extremely fine, rare.* 1
- 10 0 0 70 — Young head, halfpennies (10) 1729, 1730, 1732, 1734, 1735, 1736, 1737, 1738, 1739 (2); farthings (8), 1730, 1731 (2), 1733, 1734, 1735, 1736, 1739. *Many extremely fine, some scarce.* 18
- 8 10 0 71 — Old head, halfpennies (14) 1743, 1745, 1746, 1747, 1748, 1749, 1750 (2), 1751, 1752 (2), 1753 (2), 1754; farthings (9) 1741, 1744 (2), 1746 (2), 1749, 1750, 1754 (2). *Mostly extremely fine.* 23
- 8 0 0 72 **GEORGE III**, halfpennies (12), 1770 (2), one a circulated proof, 1771 (2), 1772, 1773, 1774, 1775, a specimen composed of two obverses, 1799 (M.7) (2) proof with K on shoulder (M.7a) and a gilt proof with script K on shoulder and plain edge (M.7b); farthings (10), 1771, 1773, 1774 (2), 1775, 1799 (5) including a bronzed proof and a gilt proof. *Nearly all extremely fine.* 22
- 4 10 0 73 — Halfpenny 1772 with the error reading GEORIVS. *Extremely fine and rare.* 1
- 27 0 0 74* — "Cartwheel" twopenny piece, 1797. *A brilliant proof struck in silver, very rare.* 1

Lot

- 75* — Penny 1797 of same issue. *A brilliant proof struck in silver, very rare.* 1
- 76 — Pattern halfpenny and farthing 1797 of same issue. *Brilliant proofs in silver, very rare.* 2
- 77 — "Cartwheel" twopence, penny, halfpenny and farthing 1797. *Brilliant proofs in gilt copper, in original case.* 4
- 78 — "Cartwheel" twopence, pennies 1797 (2), penny copper proof, farthing 1797 (2) copper and bronze proofs. *All extremely fine.* 7
- 79 — Current pennies 1806 (2), 1807, halfpenny 1807, farthings 1806, 1807 (2), proofs of penny 1806 (4), bronzed, copper and copper gilt (2), one with plain edge, halfpennies (7) 1806 copper, bronzed (2), copper gilt (2), one with plain edge, 1807 gilt but not a proof, and a proof striking in silver, *very rare*; farthings (2) 1806, bronzed, gilt copper, *some in original metal cases, all extremely fine.* 20
- 80 — Pattern halfpennies in silver, by Droz 1788, edge plain unpublished (M. *obv.* 6, *rev.* unpublished), 1790 with floret before and after date, edge lettered, M.6 var. *Both extremely fine and rare.* 2
- 81 — Pattern halfpennies in copper, etc., by Droz 1788, M.1 in copper, M.3 copper and copper gilt, M.4 copper; 1790 M.6 with guilloche edge, in copper and copper gilt; M. unpublished without artist's signature on *obv.*, copper gilt; M.7 in copper (2). *Mostly extremely fine, some rare.* 9
- 82 — Pattern halfpennies by Droz 1790, *obv.* as M.1 with eagle's head below bust, *rev.* as M. page 103 Britannia with paddle, in copper; another see M. page 103 Britannia with paddle, *rev.* nude figure of Britannia seated, in silver; another dated 1791, *obv.* George III bust to right as 1797 halfpenny, *rev.* Britannia with paddle in silver; pattern farthing 1788, *obv.* bust to right, *rev.* Britannia seated left, date in exergue, in silver, all with edges plain. *All extremely fine.* 4
- 83* — Pattern halfpenny in copper 1788, *rev.* Britannia seated on a four-cornered stone, holding a cornucopia, large ship in front, edge guilloched (M.12b). *Extremely fine and extremely rare.* 1
- 84* — Pattern halfpenny 1796, draped and armoured bust to left, *revs.* Britannia seated to left, date under (M.15). *Extremely fine and very rare.* 1

Lot

- 85 ——— Pattern halfpenny without date, made in Soho mint, bust to right, *rev.* VIVAT across field, M. page 106, *fine and very rare*; pattern halfpennies 1795 with incuse legends, in copper, bronzed and gilt copper, *extremely fine*. 4
- 86 ——— Pattern penny by Kuchler 1797, struck in silver on thin flan, variety with large bust and large lettering, edge plain (M.19). *Extremely fine and very rare*. 1
- 87 ——— Another of same variety struck in copper gilt, edge reads DO AS YOU WOULD BE DONE BY. *Extremely fine and extremely rare*. 1
- 88 ——— Pattern pennies 1797 (5), large bust and small letters (M.20), accepted bust with olive branches below, *rev.* helmeted Britannia seated to left, date beneath (M.21 and M.21 var.); large bust and small letters, *rev.* helmeted Britannia seated to left (M.23), two specimens, one thin the other thick flan. *All extremely fine and rare*. 5
- 89 ——— Pattern pennies 1797, British Commercial, Britannia seated on gun carriage (M.25), two specimens in bronzed copper proof. *Extremely fine and rare*. 2
- 90 ——— Pattern quarter penny, British Commercial, type as last lot, (M.27), pattern farthings 1798, date under bust (M.29), in silver, gilt copper, copper (2) and copper bronzed proofs. *All extremely fine*. 6
- 91 ——— Pattern penny 1799, *rev.* VIGEBIT IN OMNE AEVUM in four lines across field (M.28); pattern halfpenny by Fullerton 1799. *Both extremely fine and rare*. 2
- 92 ——— Pattern halfpennies, 1799 by Kuchler (M.30) reading BRITANN . REX . F . D, etc. (M.32) with crowned bust and edge plain, (M.33a) with edge plain, another gilt copper with edge slightly milled, 1805 (M. 35a) reading BRITANN. etc., with *rev.* BRITANNIARVM, and a farthing 1806, M.37a with K on truncation, edge plain, all bronzed proofs except 33a. *Extremely fine and some rare*. 5
- 93* ——— Pattern twopenny piece 1805, struck in silver, K on truncation, *rev.* BRITANNIARVM. *Extremely fine and very rare*. 1
- 94 ——— Pattern twopenny piece 1805, as last lot but struck in copper bronzed, also a penny, halfpenny and farthing of similar type. *Extremely fine*. 4
- 95 **GEORGE IV**, penny 1825, copper proof, pennies 1826 (2), copper and bronze proofs, halfpenny and farthing, 1826 bronzed proofs. *First two rare, all extremely fine*. 5

LOT

- 96 ——— Bronzed proofs of penny, halfpennies (2), farthing 1826; current pennies 1825, 1826 (2), halfpennies 1825 *rare*, 1826, 1827, farthings, first type 1821, 1822, 1823 (2), 1825, 1826, second type 1826 (2), 1827, 1828, 1829, 1830; half farthings 1828 (2), 1830, *proof like*; third farthings 1827 (3), *nearly all extremely fine*. 28
- 97* ——— Current penny 1827. *Extremely fine and an extremely rare date*. 1
- 98 **WILLIAM IV**, bronzed proofs of penny, halfpenny and farthing 1821, two sets. *All extremely fine*. 6
- 99 ——— Current pennies 1834 (2), 1837, halfpennies 1831, 1834, 1837, half farthing 1837, third farthings 1835, (3) one a proof. *Nearly all extremely fine, some rare*. 15
- 100 **VICTORIA**, Current copper pennies 1841, possibly a proof, 1846, halfpenny 1846, *rare*; farthing 1839 proof; half farthing 1842, *all extremely fine*. 5
- 101 ——— Bronzed proof set of penny, halfpenny and farthing 1853, copper proof penny and half farthing, all of 1853. *Extremely fine and rare*. 5
- 102 ——— Bronze coinage, bronzed proofs of penny 1860 (2) and far-

ERRATA

- 103* Pattern 1d. 1861, in copper, the very first rare first issue, only 40 to the pound, weight 172.4 grains. *Extremely fine*. 1

Delete * 104.

- 105 ——— Copper proof of penny, halfpenny and farthing 1862, bronzed proofs (?) of penny and farthing. *All extremely fine*. 5
- 106 ——— Copper proofs of penny, halfpenny and farthing 1862. *Brilliant*. 3
- 107 ——— Copper proofs of halfpenny 1864, farthing 1868, and a current halfpenny of 1876 H on thick flan (weight 8 grs.). *First two extremely fine, the last very fine and very rare*. 3
- 108 ——— Proofs in nickel 1868 of penny, halfpenny, half, third and quarter farthing. *All extremely fine and with exception of the halfpenny very rare in this metal*. 5
- 109 ——— Proofs in nickel of halfpennies 1868 (2); copper proofs of halfpenny and farthing 1878 and a halfpenny 1875 H. *All extremely fine*. 5

Lot		
110	— Copper proofs of penny, halfpenny and farthing 1875, H (for Heaton) under date. <i>A beautiful set and very rare with this mint mark.</i>	3
111	— Moore's patterns for penny 1860, bust to left, laureate, <i>rev.</i> Britannia to right, 1d. below (M.1), in copper and white metal; <i>obv.</i> same as last, <i>rev.</i> Britannia to left ONE PENNY (M.2), in silver, copper and white metal; similar <i>obv.</i> <i>rev.</i> without legend (M.2 var.), in copper and copper gilt; <i>obv.</i> crowned bust to left, <i>rev.</i> Britannia, ONE PENNY 1860 (incuse) (M.3), <i>very rare</i> ; and a mule of <i>obv.</i> of M.1 and <i>rev.</i> of M.3, the last two in copper. <i>All extremely fine.</i>	9
PATTERNS FOR A DECIMAL COINAGE		
112*	— Penny 1857, <i>rev.</i> DECIMAL PENNY ONE TENTH OF A PENNY (M.4). <i>Brilliant and very rare.</i>	1
113****	— Five farthings or centimes, halfpenny or five centimes, farthing or two centimes, half farthing or one centime, all dated 1857 (M. 5, 8, 12, 13 var.). <i>All in beautiful condition and very rare.</i>	4
114*	— Ten cents or one tenth of a shilling 1857 (M.6). <i>Brilliant and very rare.</i>	1
115*	— Decimal halfpenny, MDCCCLVII (M.7). <i>Brilliant and very rare.</i>	1
116*	— Five cents MDCCCLVII (M.9). <i>Brilliant and very rare.</i>	1
117*	— Two cents MDCCCLVII (M.10). <i>Brilliant and very rare.</i>	1
118*	— One cent MDCCCLVII (M.11). <i>Brilliant and very rare.</i>	1
119*	— Decimal penny, one tenth of a shilling 1859 (M.14a). <i>Brilliant and very rare.</i>	1
120*	— Penny 1859 on a broad flan (M.27). <i>Brilliant and extremely rare.</i>	1
121*	— Half decimal penny, one twentieth of a shilling 1859 (M.28a). <i>Brilliant and very rare.</i>	1
122*	— Half decimal penny, in three lines within a wreath, 1859 (M.30). <i>Extremely fine and very rare.</i>	1
123*	— Halfpenny, without value stated, 1859, Britannia with wreath around without legend (M.33), in nickel-bronze. <i>Brilliant and very rare.</i>	1

LOT

- 124 — A similar piece to last lot in copper (M.33). *Brilliant and very rare.* 1
- 125* — Decimal half penny 1859, diademed head to left, *rev.* inscription in laurel wreath (M.37), copper-nickel. *Extremely fine and very rare.* 1
- 126* — Halfpenny 1859, plain filleted head to left, *rev.* Britannia seated to right, without marks of value (M.41). *Extremely fine and rare.* 1
- 127* — Halfpenny MDCCCLIX, plain filleted head to left, without inner circle, *rev.* Britannia seated to left, value and date M.43. *Extremely fine and rare.* 1
- 128* — Halfpenny 1859, plain filleted head without inner circle, on a broad flan (M.44). *Brilliant and extremely rare.* 1
- 129* — Farthing MDCCCLIX, plain filleted head, with inner circle, *rev.* ONE FARTHING and date (M.46). *Brilliant and very rare.* 1
- 130* — Farthing 1859, similar type to lots 120 and 128, on broad flan. *Brilliant and extremely rare.* 1
- 131* — Two pence 1859 in nickel, crown and inscription around *rev.* 2 PENCE 1859 in three lines, with plain edge (M.50a). *Brilliant and very rare.* 1
- 132* — Halfpenny 1859 of similar type, edge plain (M.52a). *Brilliant and very rare.* 1
- 133* — Penny 1859, crown and inscription, *rev.* ONE PENNY in wreath, edge plain (M. 56). *Extremely fine and very rare.* 1
- 134* — Halfpenny 1859 of similar type, edge plain (M.57). *Extremely fine and very rare.* 1
-
- 135* — Pattern penny for the bronze coinage of 1860, by L. C. Wyon, *obv.* reads VICTORIA D . G . BRITANNIARVM REGINA, border of dots both sides (M.58). *Extremely fine and extremely rare.* 1
- 136* — Pattern penny, *obv.* reads VICTORIA D: G: BRITANNIAR: REG: F: D ., *rev.* MDCCCLX placed horizontally in exergue (M.59), nickel bronze. *Almost extremely fine and extremely rare.* 1
- 137* — Pattern penny, *obv.* reads VICTORIA D: G: BRITANNIAR: REGINA F: D and an inner circle, *rev.* MDCCCLX curved and an inner circle (M.60), nickel bronze. *Extremely fine and extremely rare.* 1

- Lot
- 138* — Pattern penny 1862, bust with coronet to left (M.60a). *Extremely fine and very rare.* 1
- 139 — Pattern ten cents, five cents, two cents and one cent 1846 by Marrian and Gausby, all in copper. *An extremely fine and an original set.* 4
- 140 — Patterns, German made, 1860, for penny, halfpenny and farthing, filleted young head to left, *rev.* crossed shields, UNITED KINGDOM AND GREATER BRITAIN; model penny and halfpenny (1844) struck in silver, very rare in this metal; other model coins (8); and a penny of 1883 with reverse inscription erased. *Mostly extremely fine.* 14
- 141 **SCOTLAND**, James III Cross raguel penny, James VI twopence, with bust, 1597, turners (2); Charles I turners (4); Charles II turners (2), bawbees 1677, 1679; William and Mary, bodles 1691, 1692, bawbees 1692, 1693; William III bawbees 1695, 1696, bodles 1695, 1696. *Many very fine, some rare,* 20

IRELAND

- 142* **EDWARD IV**, "Salvator" farthing (1643), *obv.* bust of St. Patrick, PATRICIVS, *rev.* cross pattee, alternate sun and rose in angles, SALVATOR. (Ex Clarke-Thornhill and Panter collections.) *Fine for this very rare piece.* 1
- 143 **ELIZABETH**, penny and halfpenny 1601, m.m. cross; **CHARLES I**, Kilkenny farthing; **CHARLES II**, Armstrong farthing, St. Patrick's farthing, halfpennies 1681, 1682; **JAMES II**, Gun money crown 1690, shilling 1689 10R, sixpences 1689 July and August, and Limerick halfpenny 1691. *Mostly very fine.* 12
- 144* **CHARLES II**, St. Patrick's farthing, struck in silver. *Scratched but fine and rare.* 1
- 145* **JAMES II**, striking in silver of a "Gun money" shilling small size 1690 May. *Extremely fine, rare.* 1
- 146* — Striking in silver of a "Gun money" sixpence 1689 Feb: *Almost very fine, rare.* 1
- 147* — Penny 1690 in pewter with copper plug in centre, ex Hubbard collection. *Much finer than usually fine, very rare.* 1
- 148 — Halfpennies 1690 (2) in pewter with copper plug, one without floral ornament below bust and a different harp from usual, and has plain edge (unpublished). *Fine and very good, the second very rare.* 2

Lot		
149	— Halfpennies 1685, 1686; WILLIAM and MARY 1692, 1693 (2), 1694; WILLIAM III , 1696. <i>All very fine or better.</i>	7
150*	GEORGE I , Wood's pattern halfpenny 1722, Hibernia seated looking to right, at mass of rock (Nelson 1). <i>Very fine and very rare.</i>	1
151*	— Wood's pattern halfpenny 1723 (Nelson 5), a beautiful copper proof. <i>Very rare as a proof.</i>	1
152*	— Wood's pattern halfpenny 1724 (Nelson 16). <i>Nearly extremely fine and very rare.</i>	1
153	— Wood's current coinage, halfpennies (4) 1722 harp in front, 1722 harp behind, 1723 (2); farthings 1723 (2), 1724. <i>Very fine.</i>	7
154	GEORGE II , proof halfpennies (3) 1736, and a proof farthing 1737. <i>All extremely fine proofs.</i>	4
155	— Current halfpennies 1736, 1737, 1738, 1741, 1742, 1743, 1744, 1748, 1752, 1760, farthings 1737, 1738, 1744, 1760 (3). <i>Five of the halfpennies in mint state, the others fine or better.</i>	16
156	GEORGE III , VOCE POPVLI 1760, halfpennies (2), Nelson 8 and 12, farthing 1760 (Nelson 1), <i>rare</i> ; current halfpennies 1766 (2), 1769, 1775, 1776, 1781 (2), 1782. <i>Chiefly extremely fine.</i>	11
157	— Proofs of penny 1805 (3) in copper (2), with edge milled and edge plain, and copper gilt; farthings (4) 1806 in silver, edge plain, copper, edge plain, copper gilt (2), both edge milled; current penny 1805, halfpenny 1805, farthings 1806 (3). <i>The proofs all brilliant, the silver farthing very rare, others very fine.</i>	12
158*	— Pattern penny by Mossop 1789, bust to right, harp beneath, <i>rev.</i> CONCORDIA Britannia and Hibernia shaking hands over an altar, weakly struck. <i>Very fine and extremely rare.</i>	1
159*	— Pattern penny 1813 by T. Wyan, <i>obv.</i> as Demarara stiver, T.W. in monogram on truncation of bust, <i>rev.</i> small harp (Nelson Pl. VI, 12). <i>A charming gilt copper proof, extremely rare.</i>	1
160	— A similar pattern in copper without artist's initials. <i>Extremely fine and extremely rare.</i>	1
161	GEORGE IV , Current pennies 1822 (2), 1823, halfpennies 1822, 1823, and a copper proof of halfpenny 1822. <i>All extremely fine, the last scarce.</i>	6

- LOT
 162* — Pattern penny 1822 by T. Wyon, artist's initial W on the wing above harp (unnoticed by Nelson). *A beautiful proof and extremely rare (only six struck).* 1
 163* — Pattern farthing 1822. *Brilliant and only six specimens struck.* 1

COLONIAL

- 164 **CHANNEL ISLANDS. GUERNSEY**, eight doubles 1834 bronzed proof, four doubles 1830 copper proof, current four doubles 1830; **JERSEY**, three shillings and eighteen pence tokens 1813. *All extremely fine.* 5
 165 **JERSEY**, proof set of 1/13th, 1/26th and 1/52nd of a shilling 1841, bronzed proof and copper proof of 1/13th of a shilling 1866, copper proof set of 1/13th, 1/26th and 1/52nd of a shilling 1877, copper proof of 1/24th of a shilling 1894, others (2); **CYPRUS**, proof eighteen piastres 1901; **ISLE OF MAN**, penny 1839; **MALTA**, Em. de Rohan tari, with head of John the Baptist. *All extremely fine except the Isle of Man.* 14
 166* **GIBRALTAR**, Pattern two quarto 1802, R. Keelings, date on obverse, unpublished in Atkins. *Extremely fine and very rare.* 1
 167* **IONIAN ISLANDS**, Pattern ten oboli, *obv.* bust as on George IV Irish penny of 1822, *rev.* Britannia seated, W. WYON on ground. *Only three known, brilliant and extremely rare.* 1
 168* — Pattern five obli, *obv.* bust of George III as on Demerara half stiver of 1813, *rev.* Britannia seated, W on ground. *Brilliant and extremely rare.* 1
 169** **INDIA. BOMBAY**, pattern pice and $\frac{1}{2}$ pice 1792, hexagonal in form, Atkins 75 and 76, Atkins erroneously calls them 1791. *Both brilliant and very rare.* 2
 170 — Pattern one pice as last lot. *Brilliant, very rare.* 1
 171 — Proof Surat rupee, A.H. 1215, edge plain (Atk. 29); gilt proofs of twenty, ten and five cash 1794; gilt proofs of two pice, pice and half pice 1804. *All brilliant, the first rare.* 7
 172* **BENGAL**, Patna Post two annas 1774 (A.52). *Fine and extremely rare.* 1
 173 **MADRAS**, Silver pagoda, 9 stars on each side of the pagoda (A.23), *in proof-like condition*; bronzed proof set of faluce, half faluce and quarter faluce 1803, and a gilt proof of the one cash 1803. *All brilliant.* 5

Lot	
174***	— Proofs in silver of faluce 1808, half faluce 1808, and quarter faluce 1803 (A. 132, 134 and 135). <i>All brilliant and rare.</i> 3
175	INDIA , East India Company, William IV gold two mohurs 1835 (see lot 177 for illustration). <i>Extremely fine proof, rare.</i> 1
176	— Victoria Queen, gold mohur, ten rupees, and 5 rupees 1875. <i>All brilliant proofs and rare.</i> 3
177*	— William IV, silver proof striking of two mohurs 1835. <i>Extremely fine and very rare in silver.</i> 1
178*	— William IV, pattern rupee 1834, lotus flower above value (A.37). <i>Extremely fine and rare.</i> 1
179	— Victoria, rupee, half rupee and quarter rupee 1840, variety with continuous legend on obverse. <i>A brilliant proof set.</i> 3
180	— Victoria Queen, pattern rupee 1860, on a thick flan with plain edge, <i>very rare</i> ; pattern rupee, half rupee, quarter rupee and two annas 1861, <i>rare. All brilliant.</i> 5
181	— Victoria Queen, proofs of silver rupee, half rupee, quarter rupee, two annas and copper half anna, quarter anna, half pice and 1/12th anna 1875 (for the gold of this set see lot 176); Victoria Empress, proof set of rupee, half rupee, quarter rupee, and two annas 1892. <i>All brilliant proofs and rare.</i> 12
182**	— Edward VII, pattern anna 1904 with central perforation, <i>extremely fine</i> ; half anna 1908 with wavy edge, <i>very fine. Both struck in nickel and very rare.</i> 2
183**	— DEWAS STATE J.B. Victoria Empress, silver proofs of the $\frac{1}{4}$ anna and twelfth anna 1888. <i>Brilliant and very rare in this metal.</i> 2
184*	CEYLON , George III, pattern rix dollar 1815, bust to right, by T. Wyon, <i>rev.</i> elephant, etc. <i>Extremely fine and rare.</i> 1
185	— George IV prof rix dollar 1821; copper gilt proofs of 1/48th, 1/96th, 1/192nd of a rupee 1802. <i>All brilliant.</i> 4
186*	SUMATRA , United East India Company, pattern two kapangs 1787 of oval shape, edge plain (Atkins 9). <i>Brilliant and extremely rare.</i> 1
187*	PULU-PENANG , East India Company, rupee 1788 (A.4). <i>Extremely fine and very rare.</i> 1
188*	— Half rupee 1788 of similar type (A.5). <i>Very fine and very rare.</i> 1
189	— Quarter rupee 1788 (A.6); <i>copper</i> : cent, half cent and quarter cent, A. 8, 10, 12. <i>All very fine, the first and last rare.</i> 4

- Lot
- 190 STRAITS SETTLEMENTS, Victoria, Silver proof strikings of one cent, half cent, quarter cent 1891, edges milled. *Brilliant and very rare.* 3
- 191 — A similar set to last in copper proof 1891, proof silver five cents 1882 H.; HONG KONG, proofs of twenty cents 1873, 1883 H, ten cents 1863, five cents 1892, and a pattern cent in copper 1863 (A.112). *All brilliant and scarce.* 9
- 192 MAURITIUS (or WEST INDIES), silver half, quarter, eighth and sixteenth dollar 1822, *obv.* ornamental shield, *rev.* crowned anchor. *The quarter dollar a proof, the others extremely fine.* 4
- 193 GOLD COAST, George III, two takoe 1796, gilt proof; SIERRA LEONE, gilt proof of fifty cents 1791, bronze proofs of hundred cents (one dollar), fifty cents and twenty cents 1791, and a proof Mombasa rupee 1888 H. *All brilliant and rare.* 6
- 194 SIERRA LEONE, Silver proofs of dollar, half dollar, twenty cents, ten cents 1791. *All brilliant.* 4
- 195 CAPE COLONY, Marsh and Sons halfpenny; Whyte and Co. 1861, GRIQUA TOWN halfpenny. *Very fine and very rare, others very fine.* 3
- 30 196* GRIQUA TOWN, silver ten pence, dove flying, *rev.* value, etc. *Very fine and very rare.* 1
- 4 197* — Copper halfpenny of similar type. *Extremely fine and very rare.* 1
- 7 198* UNITED STATES OF AMERICA. VIRGINIA, Raleigh's Plantation (1584), AS SOON AS WEE TO BEE BEGVNNE WE DID BEGIN TO BE VNDONE (Atkins 1). *Very fine for this rare piece.* 1
- 18 199* — MASSACHUSETTS, Pine tree shilling 1652. *Very fine and rare.* 1
- 11 200* — Oak-tree shilling 1652. *Fine and rare.* 1
- 201 — Oak-tree twopence 1662, *fine but cracked in striking, rare;* and a 1/24th real piece in pewter of James II (1685-1688) for Florida, *nearly very fine.* 2
- 202 ROSA AMERICANA, George I twopenny piece 1722, *rev.* full-blown rose, uncrowned, *very fine but corrosion spot on rev.;* penny and halfpenny of similar type and date, *both very good.* 3

- Lot
- 203* — George I, twopenny piece 1723, *rev.* crowned rose. *Extremely fine and rare in this state.* 1
- 204 — George I, penny and halfpenny of similar type. *The penny very fine, the other only good but very rare.* 2
- 205* **NEWFOUNDLAND**, Fishery Rights halfpenny 1860 (Atkins 61). *Very fine and very rare.* 1
- 206* **PRINCE EDWARD'S ISLAND**, halfpenny 1840, wheatsheaf and sickle, *rev.* plough (A.3). *Better than usually found, extremely rare.* 1
- 207 **MAGDALEN ISLAND**, penny 1815; **CANADA**, silver proofs of twenty, ten and five cents 1858, all with plain edge; twenty-five cents 1870, edge plain; copper proofs of Bank of Montreal halfpenny 1842, Upper Canada penny 1852, and Nova Scotia halfpenny 1856. *All brilliant except the first piece, mostly rare.* 8
- 208* **CANADA**, Toronto, Leslie and Sons, twopenny piece 1822. *Very fine and very rare.* 1
- 209* — Bank of Montreal, penny token 1839, with the side view of a building (A.164). *Very fine and extremely rare.* 1
- 210* — Bank of Montreal, halfpenny token 1839, also with the side view (A.166). *Extremely fine and very rare.* 1
- 211* — Railroad token, DE REPENIGUY A L'ISLE DE MONTREAL ON LACHESNAYE, *rev.* CALECHE (A.187). *Very fine and very rare.* 1
- 212 **BAHAMAS**, halfpenny 1806; **BARBADOES**, pennies (2) 1788, with and without artist's signature on truncation (A.4 and 5a); pennies 1792 (2), with marine cart on *rev.* (A. 10 and 11); halfpennies (2), (A.12); and a Moses Tolanto halfpenny (A.13). *Several proofs, the last token only fine but rare.* 8
- 213 **BERMUDA**, George III, penny 1793, variety with dot after REX, proofs in silver, copper and bronzed. *All brilliant, the silver specimen very rare.* 3
- 214 **JAMAICA**, Victoria, proofs of nickel penny and halfpenny 1869; William Smith's penny and halfpenny tokens. *Both very fine and rare.* 4
- 215 **JAMAICA**, eight reales 1758, two reales 1757, and one real 1755, all countermarked G . R in a circle on both sides (H. Wood 107). *All very fine stamps and all rare.* 3

LOT

- 216* **GUADELOUPE**, eight reales 1809, with square perforation having crenated edges, countermarked on both sides with G under a crown (H. Wood 86); **DOMINICA**, two bits, made from centre of a dollar, D and a star on one side, the other plain (H. Wood 4). *Both fine, the former rare.* 2
- 217*****MARTINIQUE**, two reales 1719 with heart-shaped perforation, plain borders to heart; real 1748, and half real 1749 with heart-shaped perforations, crenated borders. *All very fine and very rare.* 3
- 218* **ST. LUCIA**, cut third of an eight reales countermarked on one side S. LUCIE. *Extremely fine stamp, rare.* 1
- 219* **ST. VINCENT**, cut half of an eight reales, countermarked three times with S . V . in monogram. *Very fine and very rare.* 1
- 220 **ST. VINCENT**, plug from centre of a Spanish dollar countermarked VI s; **TORTOLA** countermarked on a cut half dollar 1793. *Both fine, the first rare.* 2
- 221 **ESSEQUEBO AND DEMERARA**, George III, one and half stiver. *Beautiful gill proofs, a very rare pair.* 2
- 222* **AUSTRALIA**, New South Wales, Holey Dollar 1813, countermarked NEW SOUTH WALES 1813, *rev.* FIVE SHILLINGS and wreath. *The stamps exceptionally well struck, very rare.* 1
- 223 — New South Wales, fifteen pence stamped on the centre of a Spanish dollar, edge milled; Queen Victoria pattern sixpence in silver, *rev.* value and a large 6 in centre, edge plain (Andrews 795). *First fine, second brilliant.* 2
- 224* — George V, pattern penny 1920 in nickel by Richardson, ONE PENNY in two lines. *Brilliant and very rare.* 1
- 225* — Another pattern by Richardson, penny 1921, ONE PENNY in one line. *Brilliant and very rare.* 1
- 226* — George V, pattern penny 1921, by Metermil. *Extremely fine and very rare.* 1

END OF SALE.



1



2



4



5



6



10



11



14



12



15



16



22



23



26



25



28



30



34



32





35

43

44

45

46



48

51

53

54

49



55

63

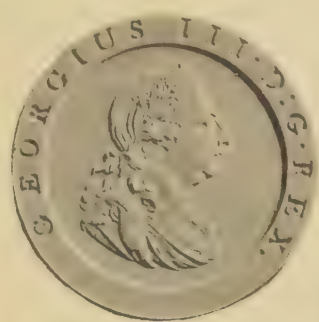
64

67

69



74



83

84



75



93



97

103



113



113

112

113

113



115



116



117



114



118



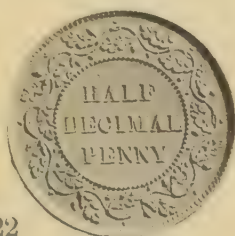
120



121



122



119



123



126



128



127



125



129



130



131





132

133

134



135

136



137

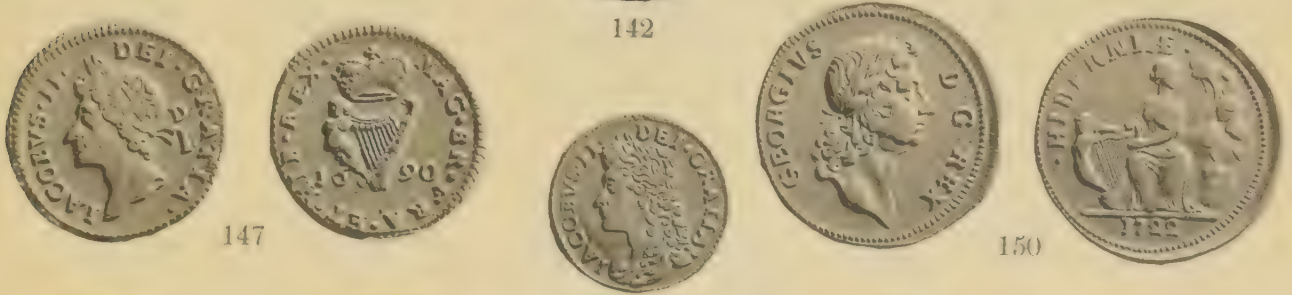
138



144

145

142



147

150



151

146

152



158



1789



159



163



166



162



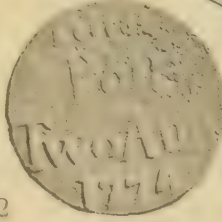
168



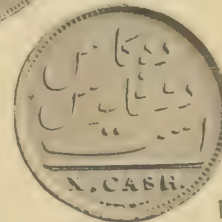
167



172



168



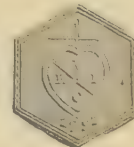
174



174



169



169



177

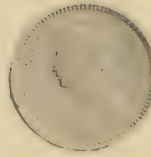


174



178





182

182

183

183

184



186

187

188

196

197



198

199

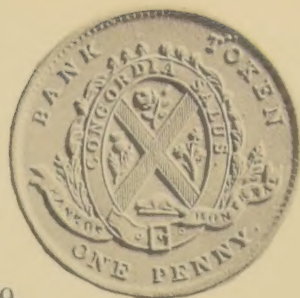
203

200

205



206



209



208



210



211



216



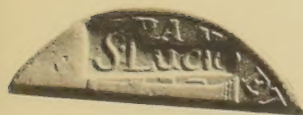
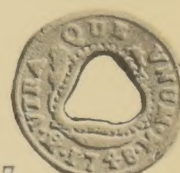
217



217



217



218



222



219



224



225



226





PRICED CATALOGUES

of Coins and Medals.

*A*FTER each sale these catalogues are issued with the prices realised printed in the margin opposite each lot, thus giving at a glance a reliable guide to values.

The final test of value must always be auction prices rather than the figures given in books of reference, for changing times and fashions soon render the latter obsolete and misleading.

On the average we issue twelve Coin and Medal catalogues a year, some of which are usually of sales of important collections. The **priced catalogues** are posted to subscribers as soon as ready, usually about a week after the date of sale and the subscription is

THIRTY SHILLINGS per annum

Glendining & Co., Limited

CONDUCT AUCTION SALES OF

SILVER JEWELLERY

ANTIQUE FURNITURE VIOLINS

SELL

War and Commemorative Medals = Coins
Postage Stamps = Fine Art = etc.

at a charge of 12½%

WEEKLY THROUGHOUT THE SEASON

—◆—

**Lots to be included in these Sales
should be sent in as soon as possible
Minimum Charge for any lot 5/-**

—◆—

PROMPT SETTLEMENTS

GLENDINING & CO., LTD.

7 BLENHEIM STREET, NEW BOND STREET, W.1

Printed by Pardy & Son (Printers) Ltd., The Triangle, Bournemouth.